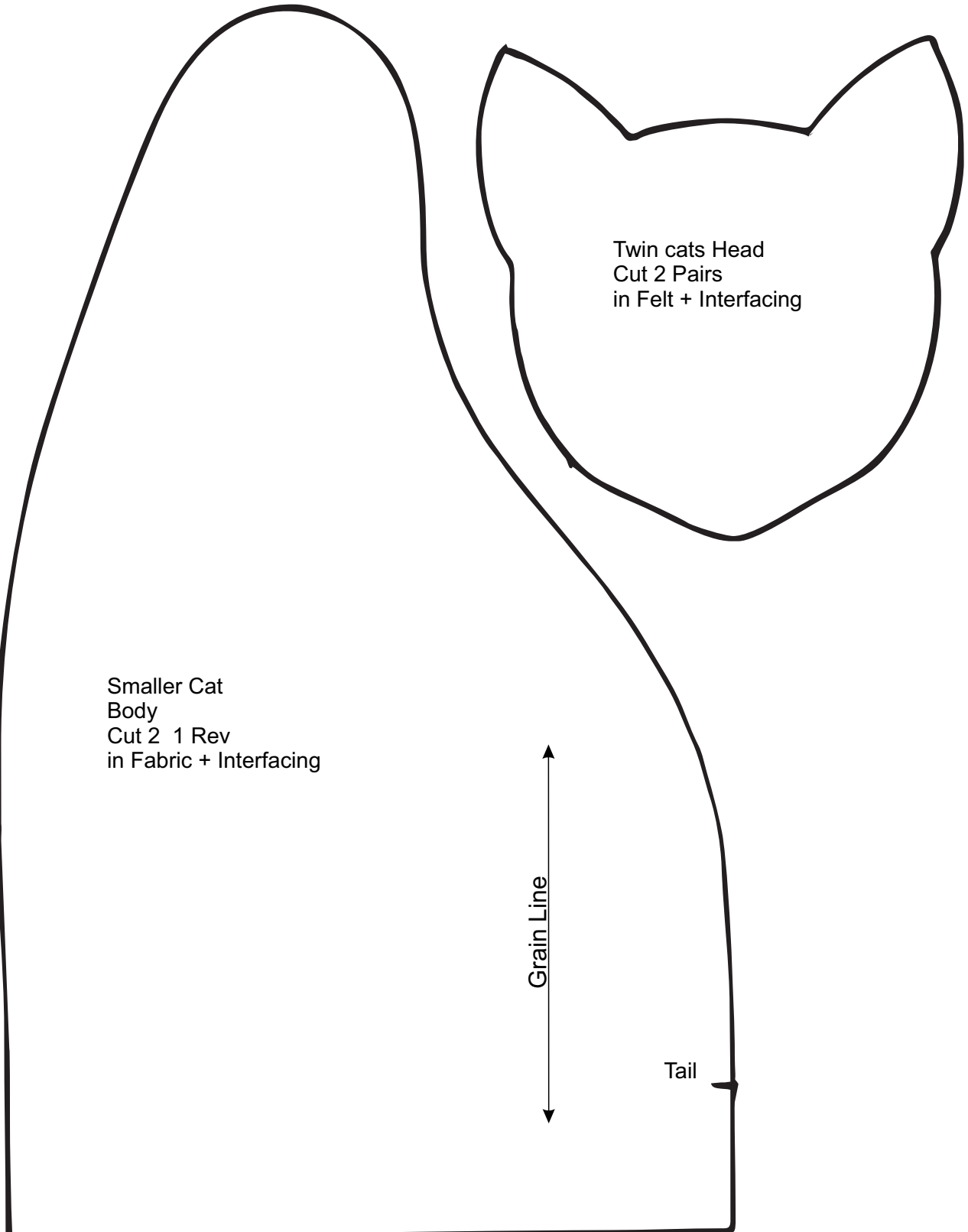


Twin Cats Pattern Templates
By Lisa Pay Page 1 of 3

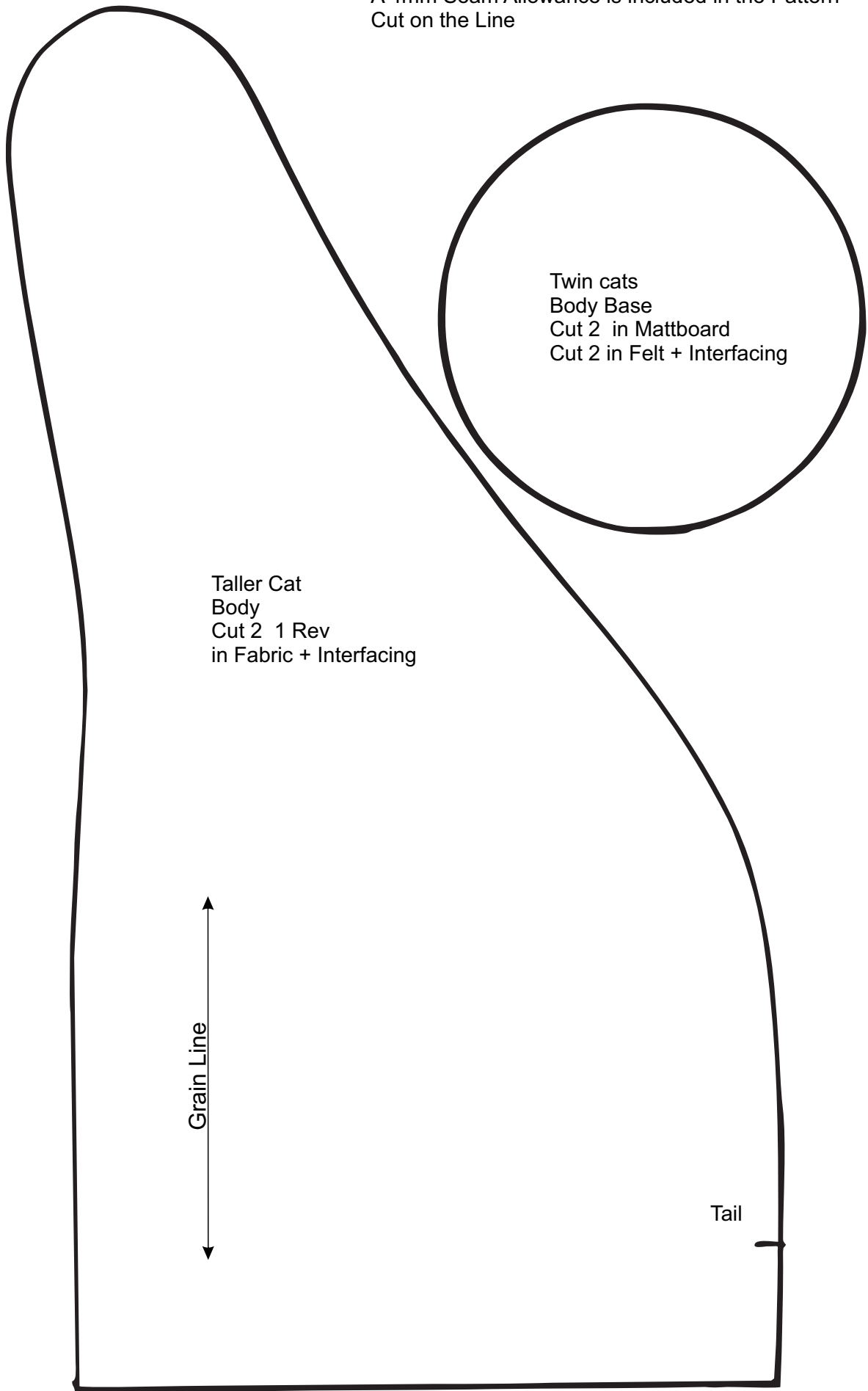
A 4mm Seam Allowance is included in the Pattern
Cut on the Line

PRINT TEST - THIS LINE SHOULD MEASURE 4 INCHES OR 101.6MM



Twin Cats Pattern Templates
By Lisa Pay Page 2 of 3

A 4mm Seam Allowance is included in the Pattern
Cut on the Line

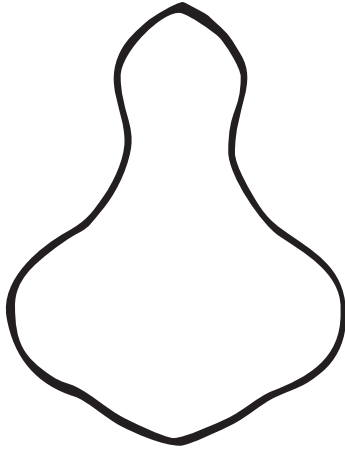


PRINT TEST - THIS LINE SHOULD MEASURE 4 INCHES OR 101.6MM

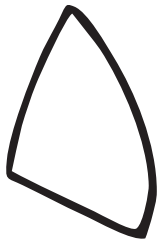
Twin Cats Pattern Templates
By Lisa Pay Page 3 of 3

A 4mm Seam Allowance is included in the Pattern
Cut on the Line

PRINT TEST - THIS LINE SHOULD MEASURE 4 INCHES OR 101.6MM



Twin cats Muzzle
Cut 2
in Felt + Fusible Web

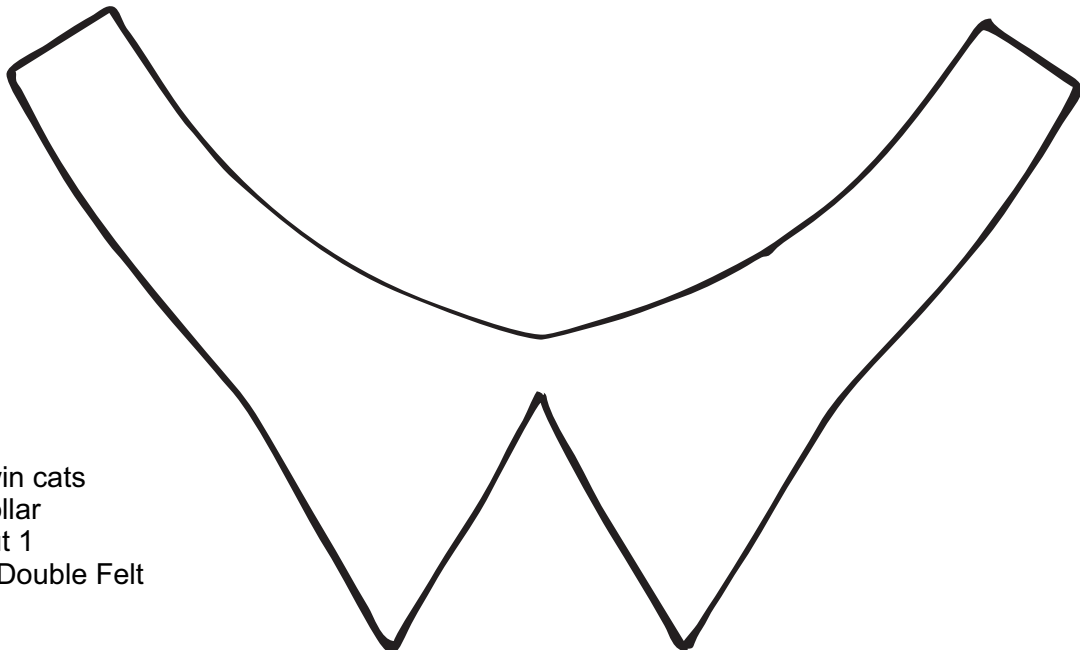


Twin cats
Inner Ears
Cut 2 Pairs
in Felt + Fusible Web

* Tails
Cut 2 strips to measure
35cm x 6cm
in Fabric *



Twin cats
Nose
Cut 2
in Felt + Fusible Web



Twin cats
Collar
Cut 1
in Double Felt

Twin Kitties



22cm & 25cm